

# 26 South Street

Baltimore, Maryland 21202

## For Sale



### Property Facts

- Zoned C-5-T0 - allows for office, retail, or residential
- 12,076 square feet, two-story building with elevator
- Beautifully-appointed executive offices with wood paneling, Tiffany ceiling, and historic elements throughout
- Library, conference rooms, gym/sauna, shower, six bathrooms, and kitchen
- Centrally located - walking distance to MD District Court, Clarence Mitchell Courthouse, Inner Harbor, The Center Club, Charles Center Metro Subway Link Station, and more
- Water Street parking garage - 2 minute walk
- 2 private parking spaces adjacent to building
- [See interior photos here](#)

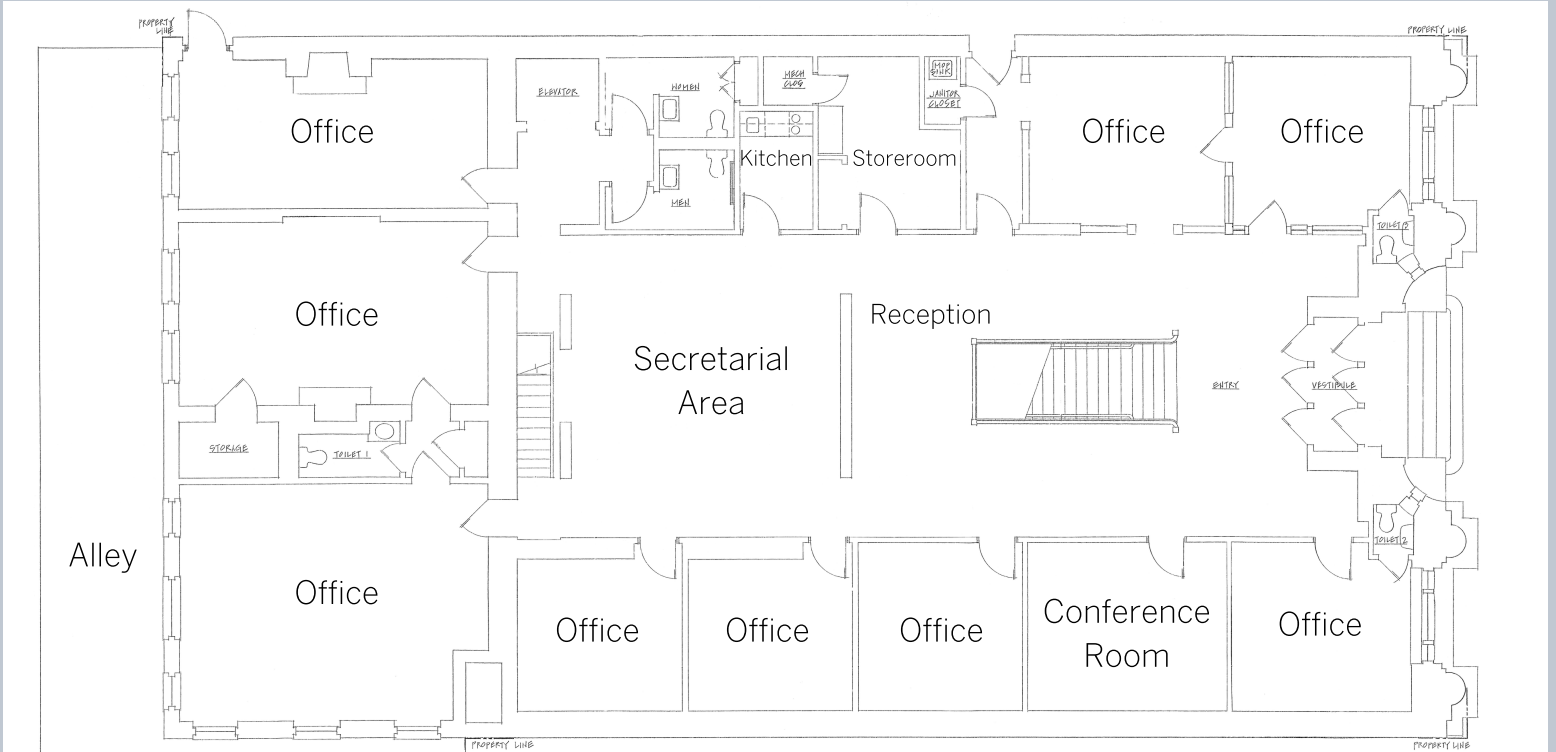


**COMPASS REAL ESTATE**  
COMMERCIAL SALES & LEASING

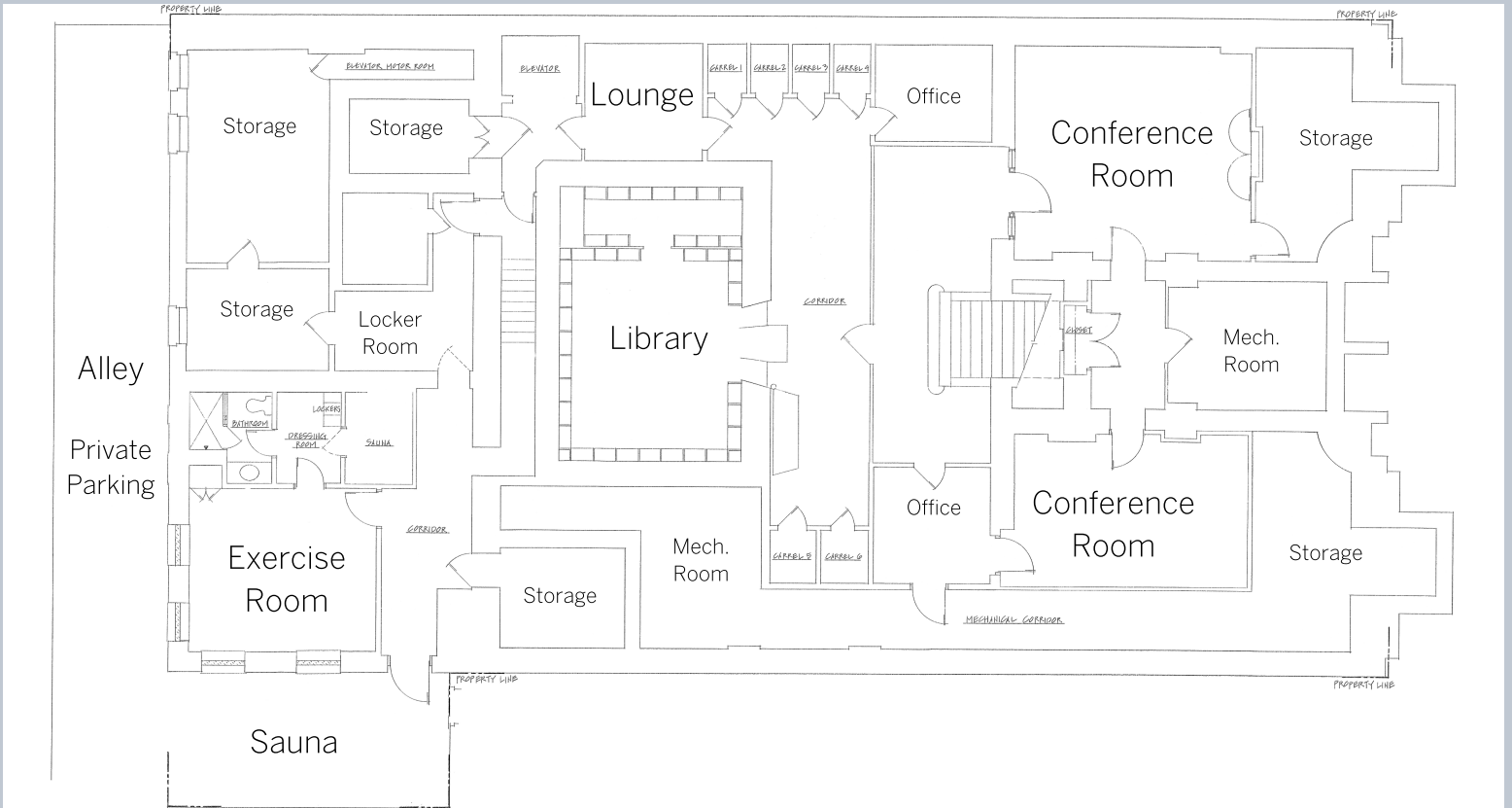
Patti Reynolds | c: 443.838.8925 | preynolds@cre360.com | www.cre360.com

# 26 South Street Baltimore, Maryland 21202

First Floor Plan



Lower Level Floor Plan



[See interior photos here](#)



**COMPASS REAL ESTATE**  
COMMERCIAL SALES & LEASING

Patti Reynolds | c: 443.838.8925 | preynolds@cre360.com | www.cre360.com